

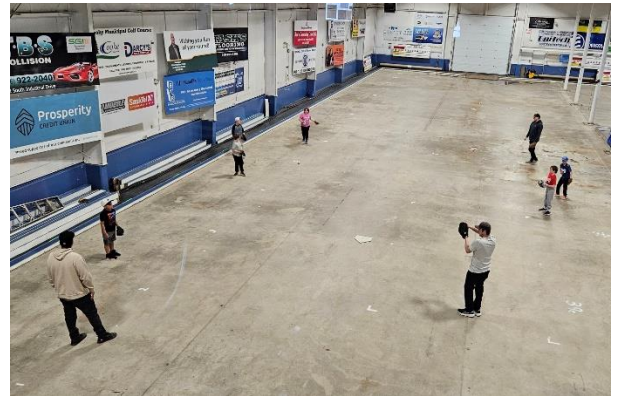
May 2026

Upcoming Events:

Mothers' Day Brunch..... May 10 – 9:00 am – 3:00 pm
Raffle Draw May 22

PAG&CC office will be open limited hours - please leave a message on phone 306-765-5201 or email pagcc@sasktel.net if we are not open. We will check the messages regularly.

**Golfing & Ball outside will come!!
Until then...**



PAGCC Spring Raffle

1st Prize: \$2000 Lake Country Gift Card (gas, groceries, liquor, retail)
2nd Prize: \$1000 Lake Country Gift Card (gas, groceries, liquor, retail)
3rd Prize: \$500 Lake Country Gift Card (\$500 gas, groceries, liquor, retail)
4th Prize: Rock & Iron Restaurant (\$500 gift card) 5th Prize: Cooke Municipal Golf Credit (\$500 value)

Draw Date May 22, 2026
7pm at Prince Albert Golf & Curling Club
Total Prizes value of \$4500.00
Proceeds to Prince Albert Golf and Curling Club Inc.

TICKETS ARE AVAILABLE AT THE PAGCC OFFICE 306-765-5201

PRINCE ALBERT GOLF AND CURLING CENTRE
Tickets are \$10 each
Only 3000 tickets available
Lottery License #RR25-0595

Spring Raffle – Thank you to all that have returned their sold ticket books. Just a reminder to members with books still out- please return to the office as soon as possible. The office will be open limited hours – please leave a phone message or email if you are not able to drop them off when we are open & we will make arrangements to get them handed in. Thanks

Pickleball

The Pickleball courts are set up.
PAG&CC Pickleball membership is \$100 for May 1 – September 13. Drop-in sessions are \$10 for each person for each session. Membership /Drop in forms are available in lobby & on our webpage – pagcc.ca. You can pay via Etransfer to pagcc@sasktel.net We encourage all players to become members of PA Pickleball – pickelballcanada.org. Members can then book courts at [Global Pickleball Network | GPN - Pickleball Software](http://GlobalPickleballNetwork.com)

PAG&CC Merchandise

Pre-order your merchandise at the office. Sample sizes are available to try on at the office.

These logos are available on Blue or Black –
"I throw rocks at houses" or "Prince Albert rocks"



- T-shirts (short or long sleeve) \$35
- Sweatshirts \$45
- Bunnyhug \$55
- Zipped Hoodie \$65
- Sweatpants \$45

Also PAG&CC logo on 2 types of hats - \$35

Merchandise supplied by local vendor - Designs by Donna

Share your Wares Trade Show

Thank you to the volunteers & vendors who helped to make the show a success.



Rock & Iron Restaurant Hours



Monday - Saturday – 9:00 am – 11:00 pm
Sunday – 9:00 am – 8:00 pm

Check out the Sunday Brunch – 10:00 am – 2:00 pm

PAG&CC Board of Directors

President	Matt Mann	Vice Presidents	Landon Adams & Remi Martin
Secretary	Lindsay Baker	Treasurer	Boni Ehmann
Directors	Pat Bibby	Preston Rindal	Clint Wiebe
	Kelly Timmerman		Leanne Wandzura
	Michael Wandzura		Jeremy Lavoie

Feel free to contact any of the **Board of Directors** with suggestions, to volunteer for committees or events, express concerns or ask questions.

Thank you to PAG&CC SPONSORS



PRINCE ALBERT

